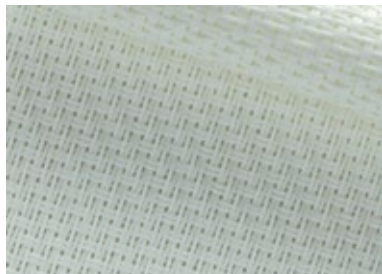


SERGE 600

WHITE - WHITE



60002002

GREY - WHITE



60001002

PEARL - GREY



60007007

GREY - GREY



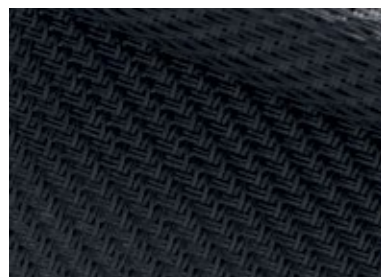
60001001

GREY - CHARCOAL



60001010

CHARCOAL - CHARCOAL

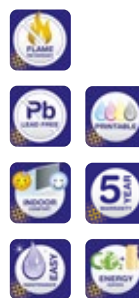


60010010

	composition	weight [g/m ²]	thickness [mm]	light fastness blue scale level EN ISO 105 B02 EN ISO 105 B04	openness factor [%]	EN 14501				application
						TS [%]	RS [%]	AS [%]	TV [%]	
White-White 002002	58% pvc 42% glasfibre + 58% pvc	525	0,74	>7	5	21/21	65.9/66.3	13.2/12.7	21.2/21.2	interior / exterior
Grey-White 001002						6.7/6.7	37.2/26.9	56.2/66.4	6.6/6.6	
Pearl-Grey 007007						10.1/10.1	38.3/39.4	51.7/50.5	8.4/8.4	
Grey-Grey 001001						3.5/3.5	15.1/15.1	81.3/81.4	3.6/3.6	
Grey-Charcoal 001010						3.6/3.6	9.9/12.6	86.5/83.8	3.6/3.6	
Charcoal-Charcoal 010010	3.6/3.6	5.0/4.8	91.4/91.6	3.6/3.6						

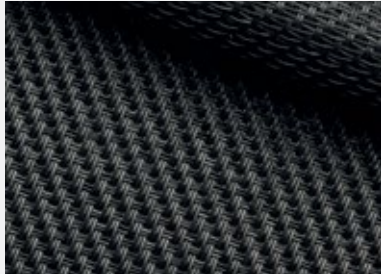
Tearing resistance (daN) UNE EN ISO 4674-1 method 2 - Warp: 8.5, Weft: 7.5
 Breaking strength (daN/5cm) UNE EN ISO 1421 - Warp: 260, Weft: 225
 Certificates: ask for availability

SERGE 600



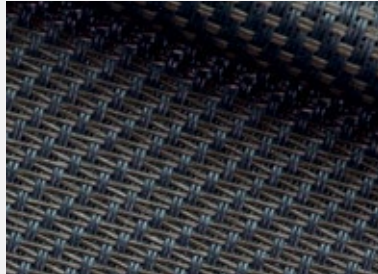
SERGE 600

PURE BLACK



60030030

CHARCOAL - BRONZE



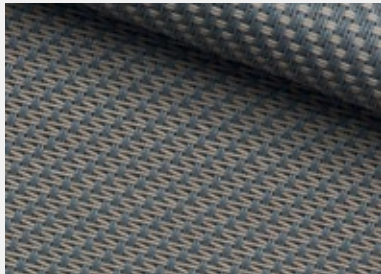
60010011

SANDSTONE



60033033

GREY - SAND



60001003

LINEN - LINEN



60008008

LINEN - WITE

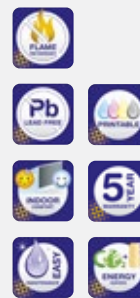


60008002

	composition	weight [g/m ²]	thickness [mm]	light fastness blue scale level EN ISO 105 B02 EN ISO 105 B04	openness factor [%]	EN 14501				application
						TS [%]	RS [%]	AS [%]	TV [%]	
Pure Black 030030	42% glasfibre + 58% pvc	525	0,74	>7	5	5.9	3.7	90.4	5.9	interior / exterior
Charcoal-Bronze 010011						6.1	6.5/6.0	87.4/87.9	6.1	
Sandstone 033033						7.1	20.4/20.5	72.4/72.5	6.8	
Grey-Sand 001003						4.7	26.5/21.5	68.8/73.8	4.5	
Linen-Linen 008008						14.9	52.5/52.7	32.5/32.4	12.9	
Linen-White 008002						15.5	58.2/56.4	26.4/28.1	13.7	

Tearing resistance (daN) UNE EN ISO 4674-1 method 2 - Warp: 8.5, Weft: 7.5
 Breaking strength (daN/5cm) UNE EN ISO 1421 - Warp: 260, Weft: 225
 Certificates: ask for availability

SERGE 600



SERGE 1%

WHITE - WHITE



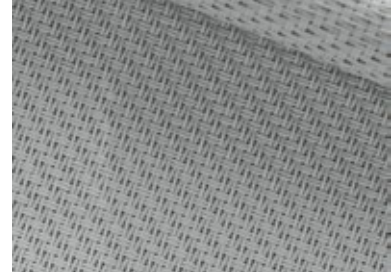
61002002

GREY - WHITE



61001002

PEARL - GREY



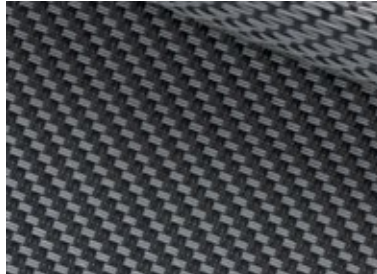
61007007

GREY - GREY



61001001

GREY - CHARCOAL



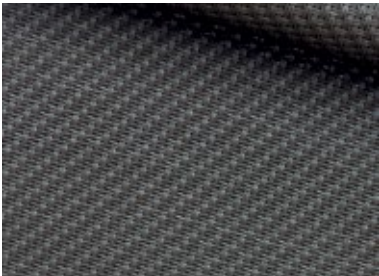
61001010

CHARCOAL - CHARCOAL



61010010

BRONZE - BRONZE



61011011

LINEN - LINEN

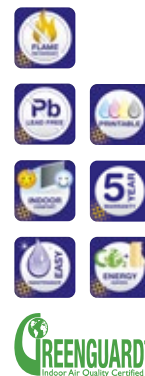


61008008

	composition	weight [g/m ²]	thickness [mm]	light fastness blue scale level EN ISO 105 B02 EN ISO 105 B04	openness factor [%]	EN 14501				application
						TS [%]	RS [%]	AS [%]	TV [%]	
White-White 002002	42% glasfibre + 58% PVC	638	0,78	>7	1	12,8	71,3	15,9	12,9	interior / exterior
Grey-White 001002						2,2	44,8/31,2	53/66,6	2	
Pearl-Grey 007007						2,8	36,9	60,3	2,1	
Grey-Grey 001001						2,4	17,4	80,2	2,2	
Grey-Charcoal 001010						1,2	10,5/14	88,3/84,8	1,2	
Charcoal-Charcoal 010010						1,1	5,9	93	1,1	
Bronze-Bronze 011011						1,4	8,6	90	1,3	
Linen-Linen 008008						5,9	54,2	39,9	3,7	

Tearing resistance (daN) UNE EN ISO 4674-1 method 2 - Warp: 5,9, Weft: 6,2
 Breaking strength (daN/Scm) UNE EN ISO 1421 - Warp: 321, Weft: 277
 Certificates: ask for availability

SERGE 1%



SERGE 600 BO LUNAR

WHITE - WHITE



6BO002002

WHITE - PERL GREY



6BO002007

PEARL GREY - PEARL GREY



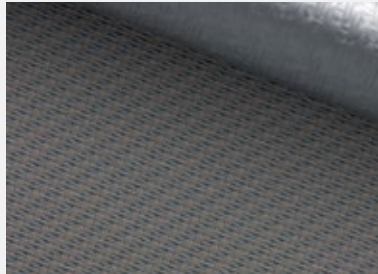
6BO007007

WHITE - GREY



6BO001002

OYSTER SHELL



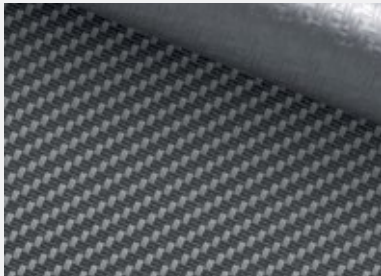
6BO033001

GREY - GREY



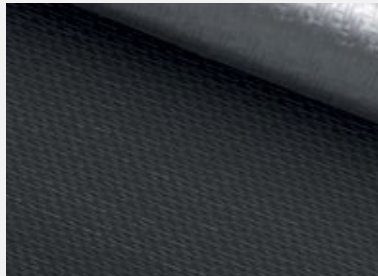
6BO001001

GREY - CHARCOAL



6BO001010

CHARCOAL - CHARCOAL



6BO010010

	composition	weight [g/m ²]	thickness [mm]	light fastness blue scale level EN ISO 105 B02 EN ISO 105 B04	openness factor [%]	EN 14501				application
						TS [%]	RS [%]	AS [%]	TV [%]	
White-White 002002	33% GLASFIBRE 47% PVC 20% PVC LAMINATE	678	0,73	>7	0	0	68.8/33.7	31.2/66.3	0	interior / exterior
White-Perl Grey 002007						0	47.8/33.2	52.2/66.8	0	
Pearl Grey-Pearl Grey 007007						0	35.5/34	64.5/66	0	
White-Grey 001002						0	40.3/33.7	59.7/66.3	0	
Oyster Shell 033001						0	18.2/33.4	81.8/66.6	0	
Grey-Grey 001001						0	17.2/33.1	82.8/66.9	0	
Grey-Charcoal 001010						0	11/33.7	89/66.3	0	
Charcoal-Charcoal 010010						0	6.2/33.4	93.8/66.6	0	

Tearing resistance (daN) UNE EN ISO 4674-1 method 2 - Warp: 8.5, Weft: 9
 Breaking strength (daN/5cm) UNE EN ISO 1421 - Warp: 224.2, Weft: 176.6
 Certificates: ask for availability

SERGE 600 BO LUNAR

